

# Maple



The Maple three bedroom house comprises a kitchen/diner, living room with French doors leading to the garden and a cloak room on the ground floor. The first floor has three bedrooms and a family bathroom.

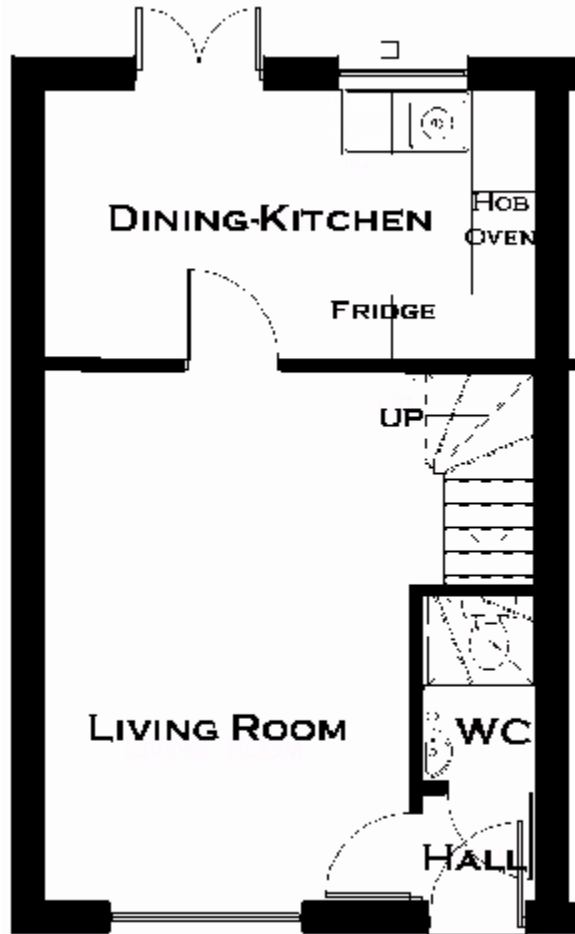


Living Room	4.550	x	3.350	14'10"	x	10'10"
Kitchen /Diner	4.550	x	2.450	14'10"	x	8'1"
Bedroom 1	4.250	x	2.675	13'10"	x	8'7"
Bedroom 2	3.175	x	2.575	10'4"	x	8'4"
Bedroom 3	2.450	x	1.800	8'00"	x	5'9"
Bathroom	1.900	x	1.700	6'2"	x	5'6"

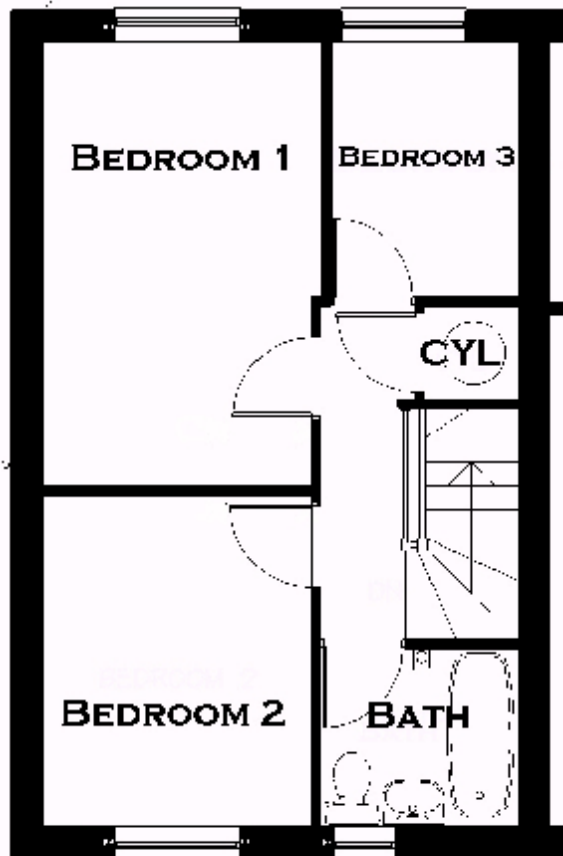
Tel 01775 724777 Fax.01775762171  
Email [jenny@mparkerandsons.co.uk](mailto:jenny@mparkerandsons.co.uk)  
[www.mparkerandsons.co.uk](http://www.mparkerandsons.co.uk)

**M. Parker and Sons.**  
St Johns Rd  
Spalding  
Lincs PE11 1JX

The contents of this leaflet does not form any part of the contract and the rights to change Plans and specifications is reserved by M. Parker and sons Ltd..



**GROUND FLOOR**



**FIRST FLOOR**